

Lewannick Polyphant & Trevadlock Newsletter

Lewannick Parish Council

Lewannick Parish Council held their Ordinary Meeting at Lewannick Village Hall on Wednesday 18 November at the new time of 7p.m.

There was one planning application for discussion, namely:- PA15/0934 Proposal for two storey extension Trelaske Cottage Mr G Scott. The application was not supported. Our reasons for non-support were as follows:-

Size of development out of proportion and larger than previous application.

Velux style window in roof of existing cottage.

Materials not properly specified but render and plastic windows mentioned - not suitable

Bat survey needs to be undertaken.

The precept for the year 2016/17 was carefully reviewed.

It was agreed that the precept would need to increase slightly to £14,000.

We have contacted Highways with regard to Landers Lake, Lewannick and the problems that are incurring there with flooding. We have also spoken to them about additional signage for traffic speeding and understand that this is being reviewed. There will be a further speed monitoring exercise undertaken.

We do not hold an ordinary meeting in December.

However, we will be holding an extraordinary meeting in order to discuss a planning application that has come through for Blackhill Quarry. This meeting will be held at Polyphant on Wednesday 9 December.

Our next ordinary meeting is also scheduled to take place in Polyphant. The meeting will be held on Wednesday 20 January and will commence at 19.00 hours.

Finally we would like to wish everyone a very Happy Christmas.

Lewannick Christmas Fayre

Hosted by Lewannick Amateur Dramatics Society



Sat 12th Dec 1.30pm
Lewannick Village Hall

Lewannick Amateur Dramatics Society

Presents

Snow White and the Seven Dwarfs



13th - 16th January 2016
Wed & Thurs £5 Adult / £3 Child
Fri & Sat £6 Adult / £4 Child

*Raising money for Cornish Blind, Cornwall Air Ambulance,
& Wired*

To book tickets call 01566 86313

Merry Christmas
Parnell's Garage LEWANNICK
Servicing • Repairs • Brakes • Clutches
Exhausts • Welding • MOT Repairs
Cars • Light Commercial • 4x4s
01566 782 644 or 07962 456 663

Suzie Preston ITEC FHT CNHC
Massage for injury recovery Reflexology
for well-being
Tel 0785 2671391
Gift Vouchers Available Merry Christmas



Polyphant's Charitable Village Store

8am – 8pm Mon – Sat

Groceries, Fresh fruit & Veg, Confectionary, Fresh Bread & Cakes, Chutneys & preserves, Greeting cards & gifts, Off Licence,

Hot pasties & sausage rolls Freshly served Tea & Coffee, logs kindling & coal
01566 86029

All profits from the shop go to Charity

Lewannick Post Office & Stores

Groceries, Off-licence, Cakes & Pasties, Fruit & Vegetables, Fresh Bread, Newspapers & Magazines, Coal & Logs, Dry Cleaning Service, Greeting Cards, Bottled Gas –all sizes available at cheap prices!

Opening Hours Shop

Mon - Sat: 7.00am - 8.00pm
Sun: 9.00am – 4.00pm

Post Office

Mon – Fri: 9.00am – 5.30pm
Sat: 9.00am – 12.30pm

01566 782 269

A Very Happy Christmas

Polyphant Methodist Church

Polyphant Morning Service 10.30

Sun 6th Mr A Howe
Sun 13th Mrs J Barriball
(Carol service)
Sun 20th Rev J Smart (Sacrament)
Sun 27th Service at South
Petherwin 11am

EVENTS

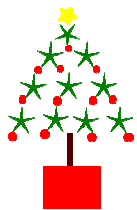
Wednesday 9th Coffee morning and
book club 10-11.30 (all welcome)

*Polyphant Chapel is a collection point for
Launceston Food Bank if you wish to
donate food at any time, all contributions
are most welcome.*

Rev. Jo Smart 01566-782240
Owen Withers 01566 86337
Alix Watt 01566 86734
Bookings Jenny Creber 01566 779215

**CHRISTMAS CARDS, CALENDERS,
AND MORE AT LEWANNICK
CHURCH FROM THE
18TH NOVEMBER**

Lewannick Tree Festival



St Martin's Church
open daily from
18th Dec - 6th Jan
Refreshments Available
18th - 20th Dec 2-4pm

LEWANNICK WEATHER FOR LATEST WEATHER
CONDITIONS AND RECORDS FROM LEWANNICKS
OWN WEATHER STATION
<http://weather.lewannick.info>

Community Cinema

Presents

Nativity

Fri 18th December
British Christmas Comedy

Cert PG - 105 Mins

Doors open 7.30 Film starts 8pm

Admission Adult £ 4.50

Under 16 £3.00

www.filmlewannick.co.uk

07821 879106/ 01566 782796

Lewannick Church

Sun 6th 09.30 Communion
Sun 13th 10.00 Morning
Worship
Sun 20th 09.30 Communion
Sun 27th 10.00 Family
Worship

WEDNESDAY 4th open coffee
morning
9.30-11.30 with knit & knatter

CHRISTMAS SERVICES

20th Dec Community Nativity
Service
24th Dec 23.30 Midnight Eucharist
27th Dec 10.00 Team Service & Cafe
Style

*Lewannick Church is a food bank collection point.
Please leave any contributions (non
perishable) in the crate near the font*

Polyphant church Carol Service

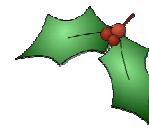
Sun 13th 10.30
A Village & Family occasion
with Mrs Janet Barriball
Tea Coffee & Mince Pies after the service
contact Owen Withers 86337
Alix Watt 86734
Come along and enjoy the Carols in the
company of your fellow residents

**NEWSLETTER DISTRIBUTER
FOR THE OLD PART OF POLYPHANT
copies available at 3 Cows on't Green**

Archer Arms

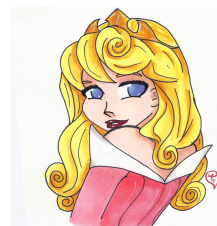
What's on in December

Fri 4th Live Music with Odd Sox
Sun 13th Quiz Night 7.30pm
Sat 19th Christmas Raffle 7pm &
Live Music with Black Velvet 9pm
Mon 21st open Darts Singles Comp
Monday Nights £5 Meal Offer
Tuesday Nights 2x Steak
(Gammon or Rump)
2x Drink (pint, Wine, or Soft drink)
Sunday Roast 12-3pm
Breakfast 1st Sat every month
(5th Dec) 9.30-11.30
Christmas Party Menu now
available
Wed-Sat Lunchtime & Evenings
all parties catered for
Call Gemma or Rob on 01566
782700



Coads Green Amateur Players
presents

Sleeping Beauty



Coads Green Social Centre
wed 27th - sat 30th Jan 2016
7.30pm
Adults £5 Child £2.50
Call Di 01566 782917 to Book tickets

Rainfall for Lewannick

OCT 2015 3.92" 98mm
OCT 2014 7.70" 1925mm
Compiled by John Panter

CLOSING DATE FOR NEXT NEWSLETTER: WEDNESDAY 16TH DECEMBER 2015(PLEASE NOTE THIS MONTHS CLOSING DATE)

Please send your contributions to Emma Ryan, Rose Cottage, Lewannick, Launceston, PL15 7QD. E-mail: newsletter@lewannick.info The Editor reserves the right to cut or omit articles submitted. Views expressed are not necessarily those of the Editor or of the Parish Council.

For latest news, events, local business, where to stay, and much more visit: www.lewannick.info. Published by Lewannick Parish Council.